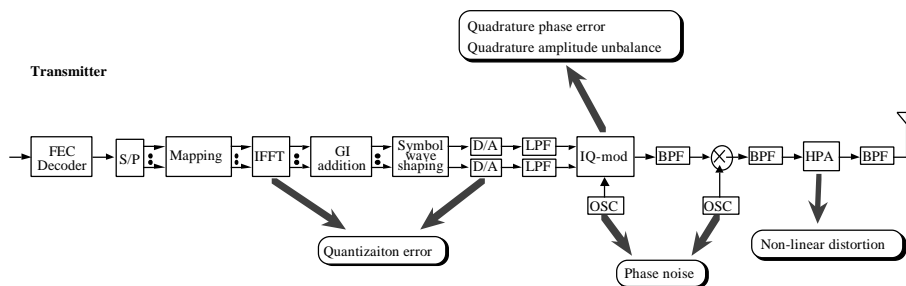


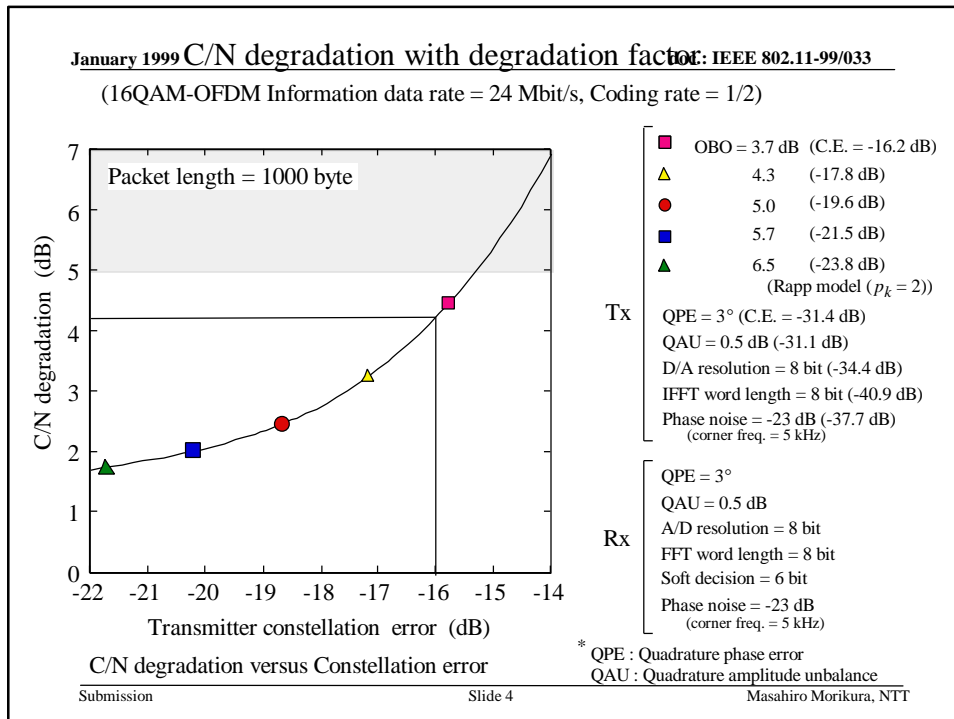
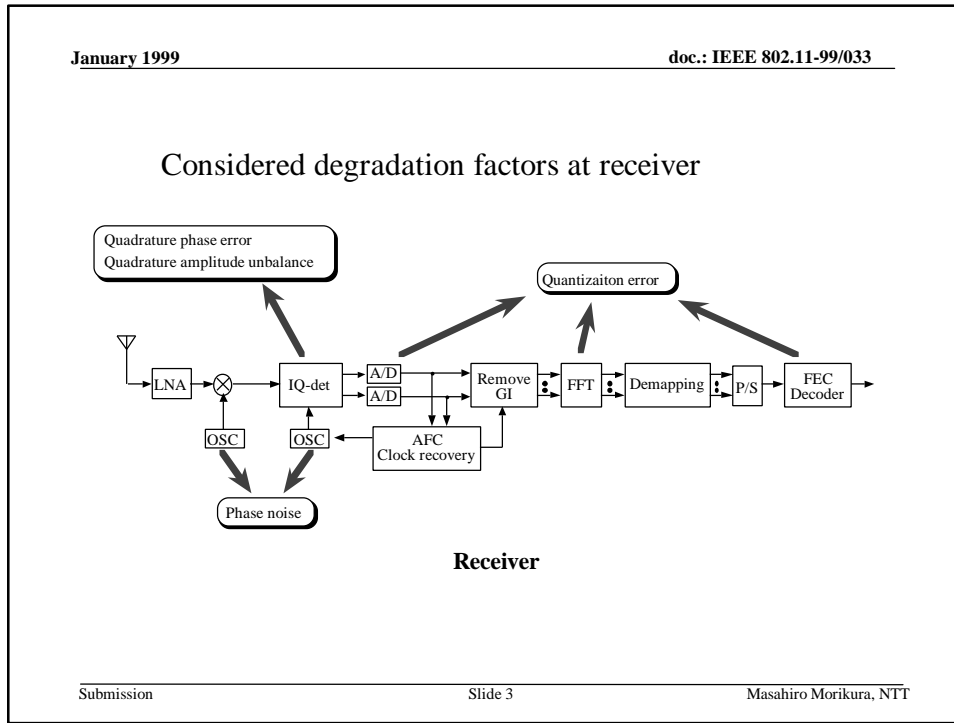
Transmit Modulation Accuracy

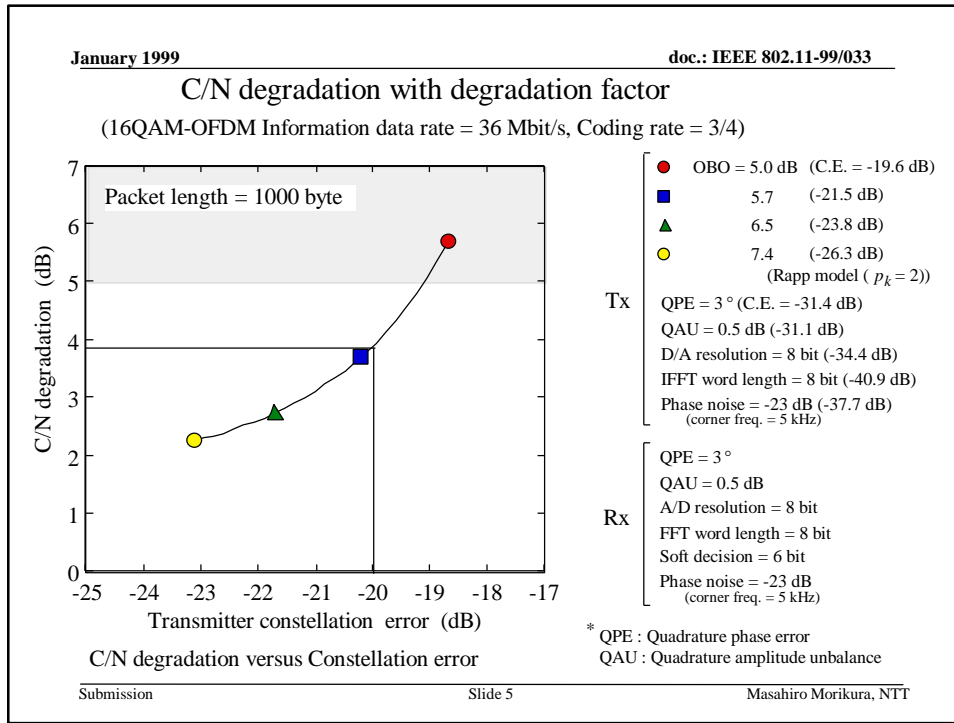
Masahiro Morikura
NTT

morikura@mosun.wslab.ntt.co.jp

Considered degradation factors at transmitter







January 1999 doc.: IEEE 802.11-99/033

Conclusion

Proposed transmitter constellation error is shown below.

Allowed Relative Constellation Error versus Data Rate

Data Rate	Relative Constellation Error
24 Mbit/s	-16 dB
36 Mbit/s	-20 dB

Submission
Slide 6
Masahiro Morikura, NTT

